



Corinthian Yacht Club of Portland

Schooner Creek Boat Works
Pacific NW Offshore

Ilwaco, WA to Victoria, BC  **48th International Yacht Race**

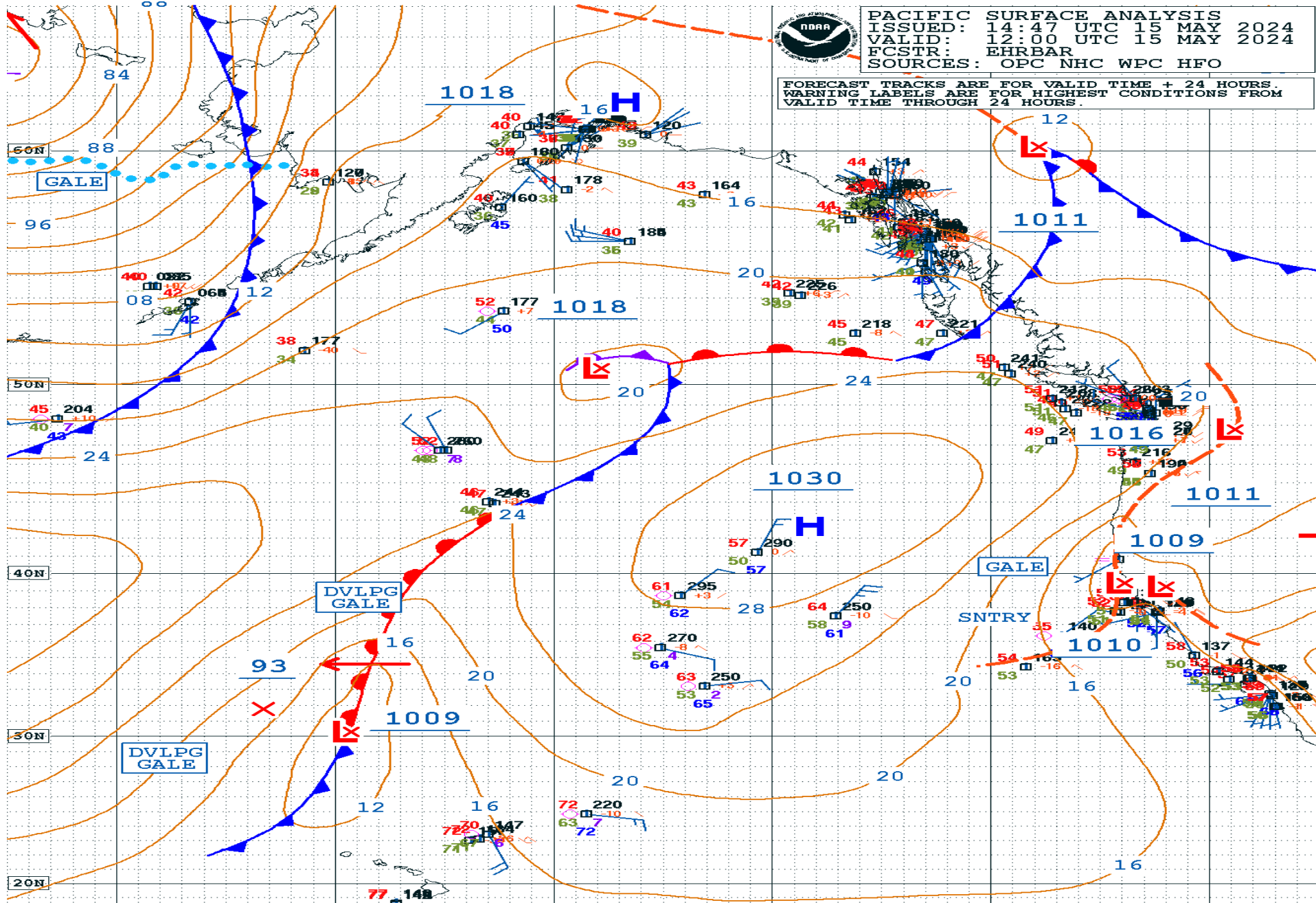
Corinthian Yacht Club of Portland

May 16-19, 2024

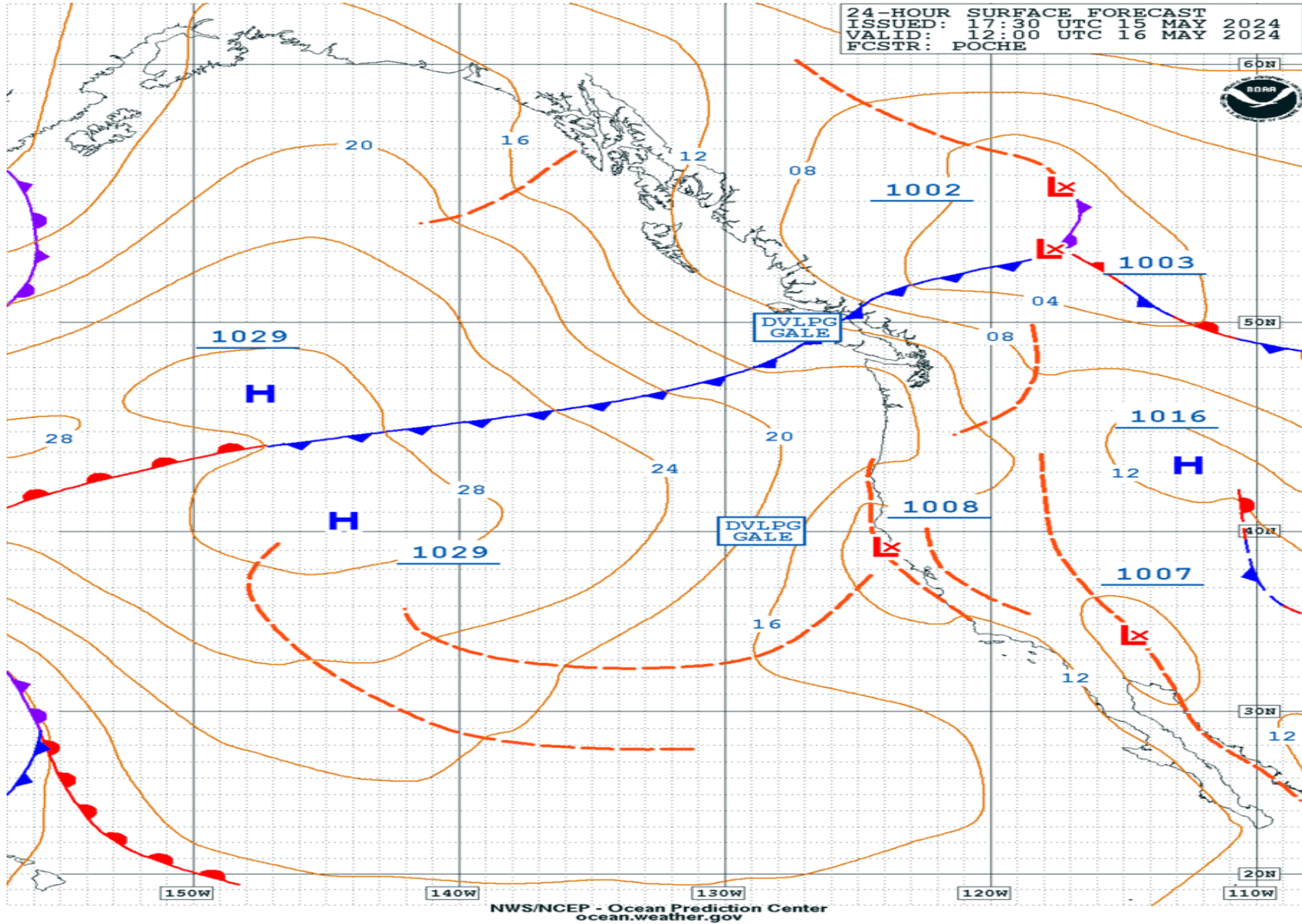
The Overall Forecast

- The Pacific High is trying to get set a little early this year, but it is still weak at 1030 MB. It is roughly centered at 43N 138W which is east and north of where we'd expect to find it at this time of the year.
- We also have a weak low-pressure system 1011MB inland in northern BC with an attached cold front extending south to the north end of Vancouver Island.
- This cold front will drag over the race area tomorrow afternoon. The isobars will compress bringing a stronger breeze to the northern coastal waters and a steady shift in wind direction from the WSW to the NNW.

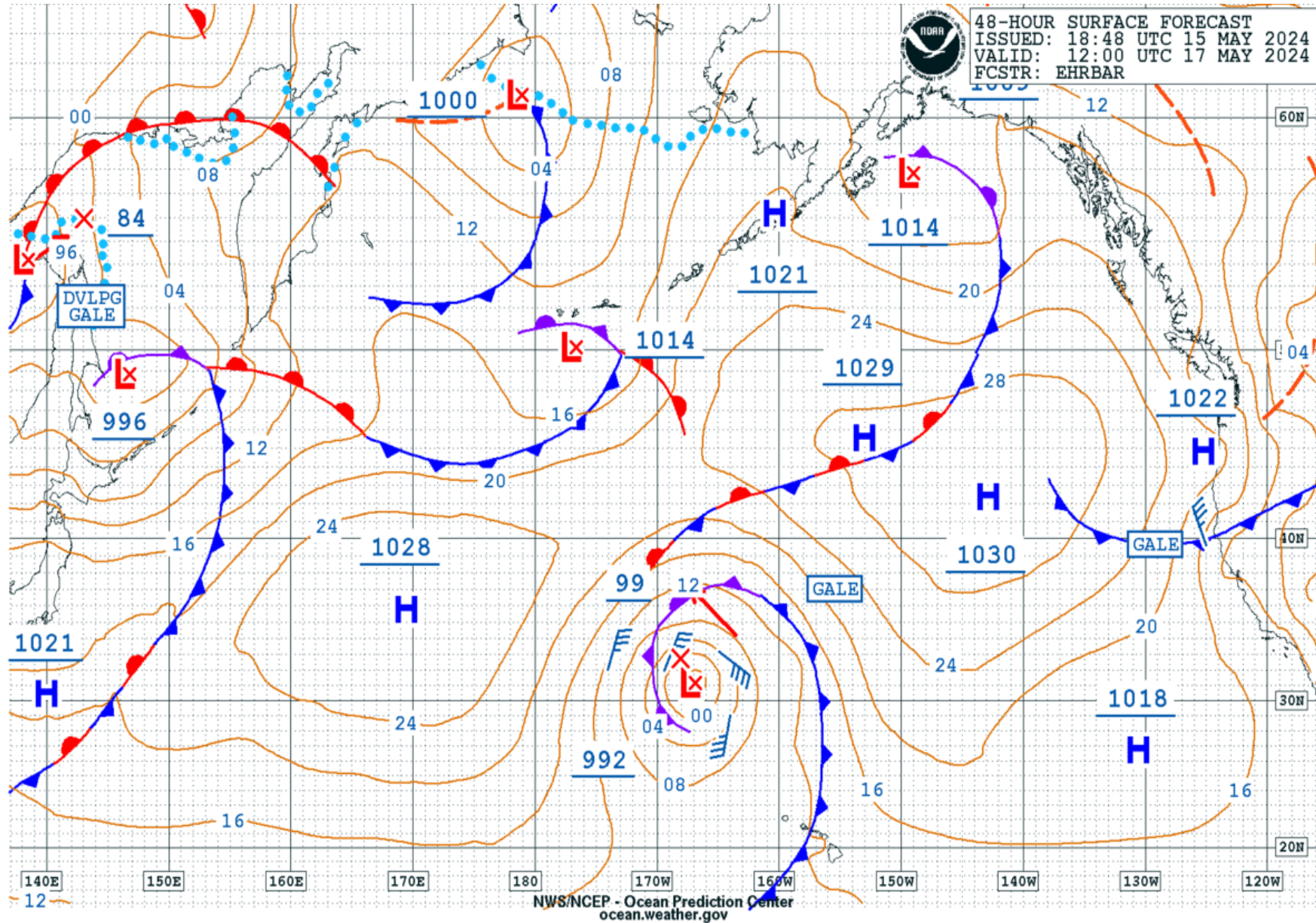
15 May Surface Analysis



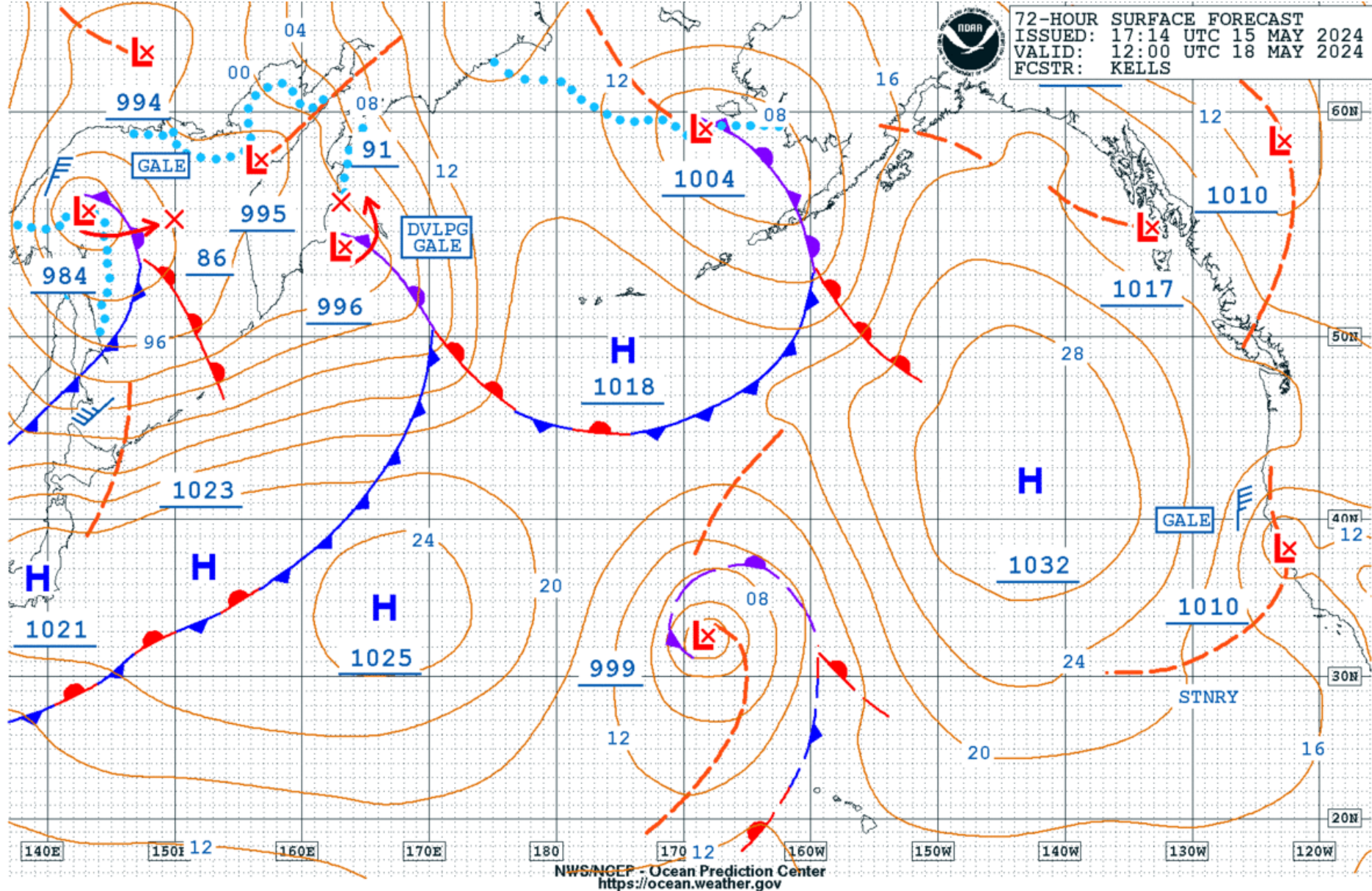
16 May Surface Forecast



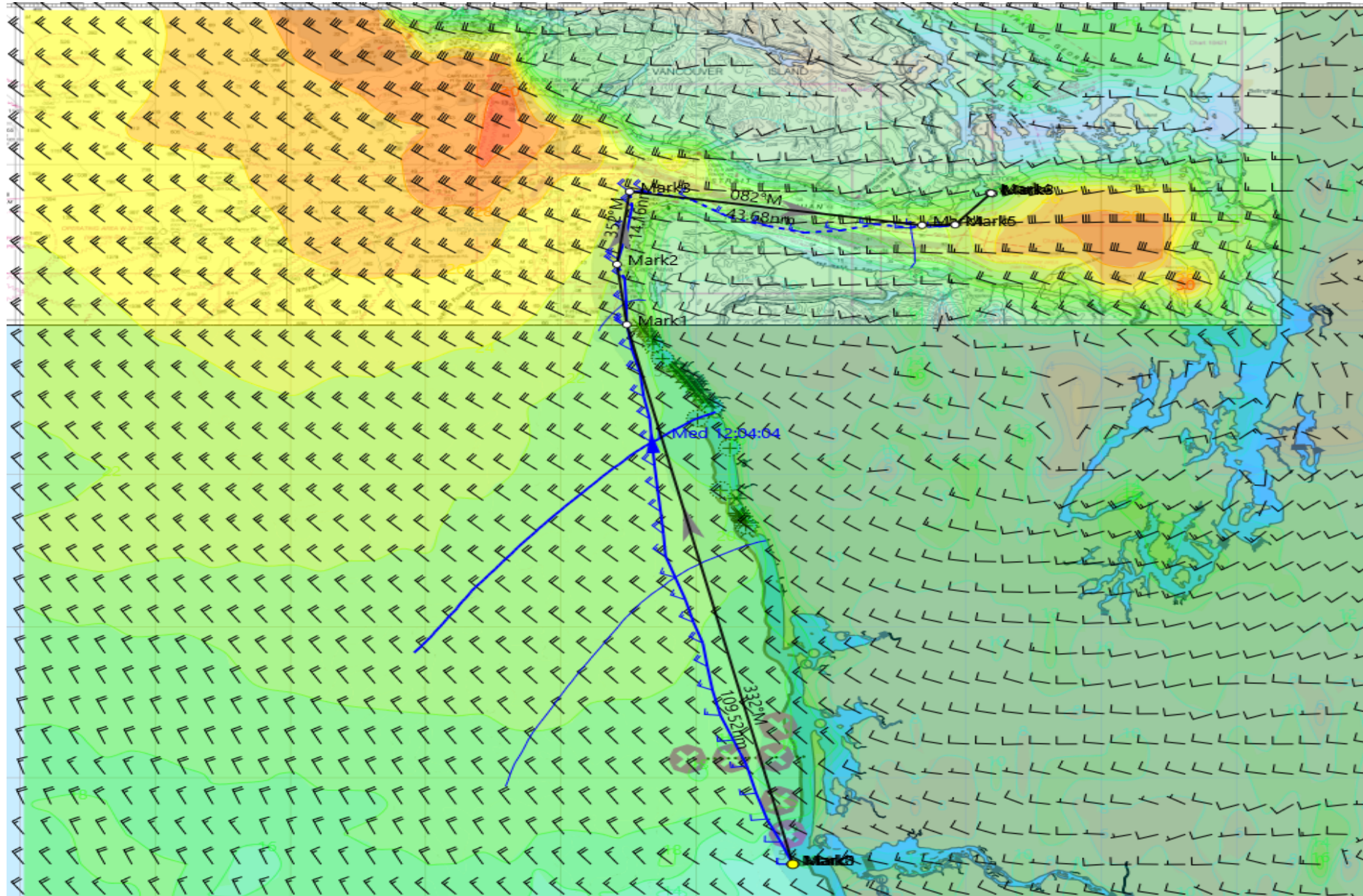
17 May Surface Forecast



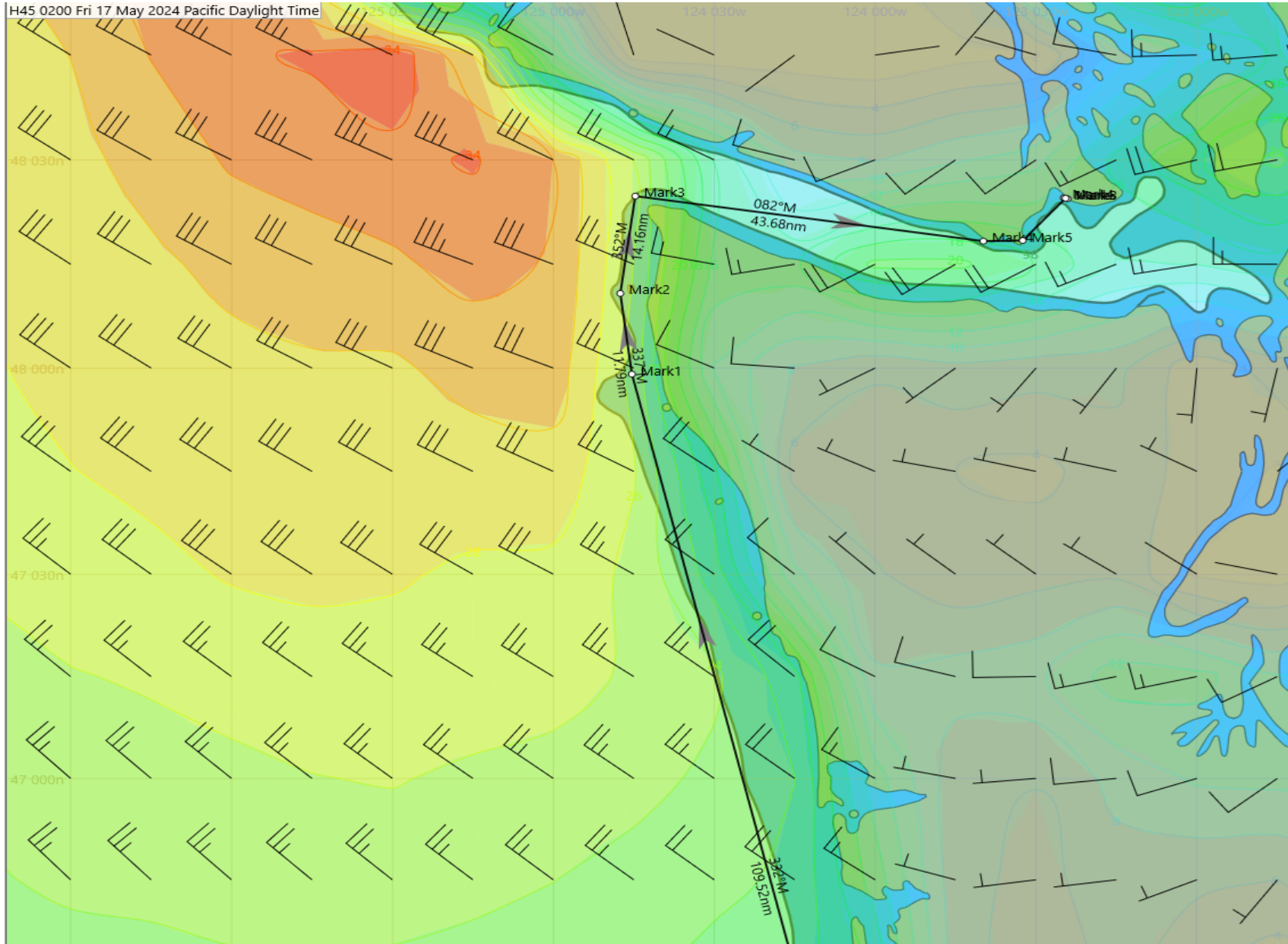
18 May Surface Forecast



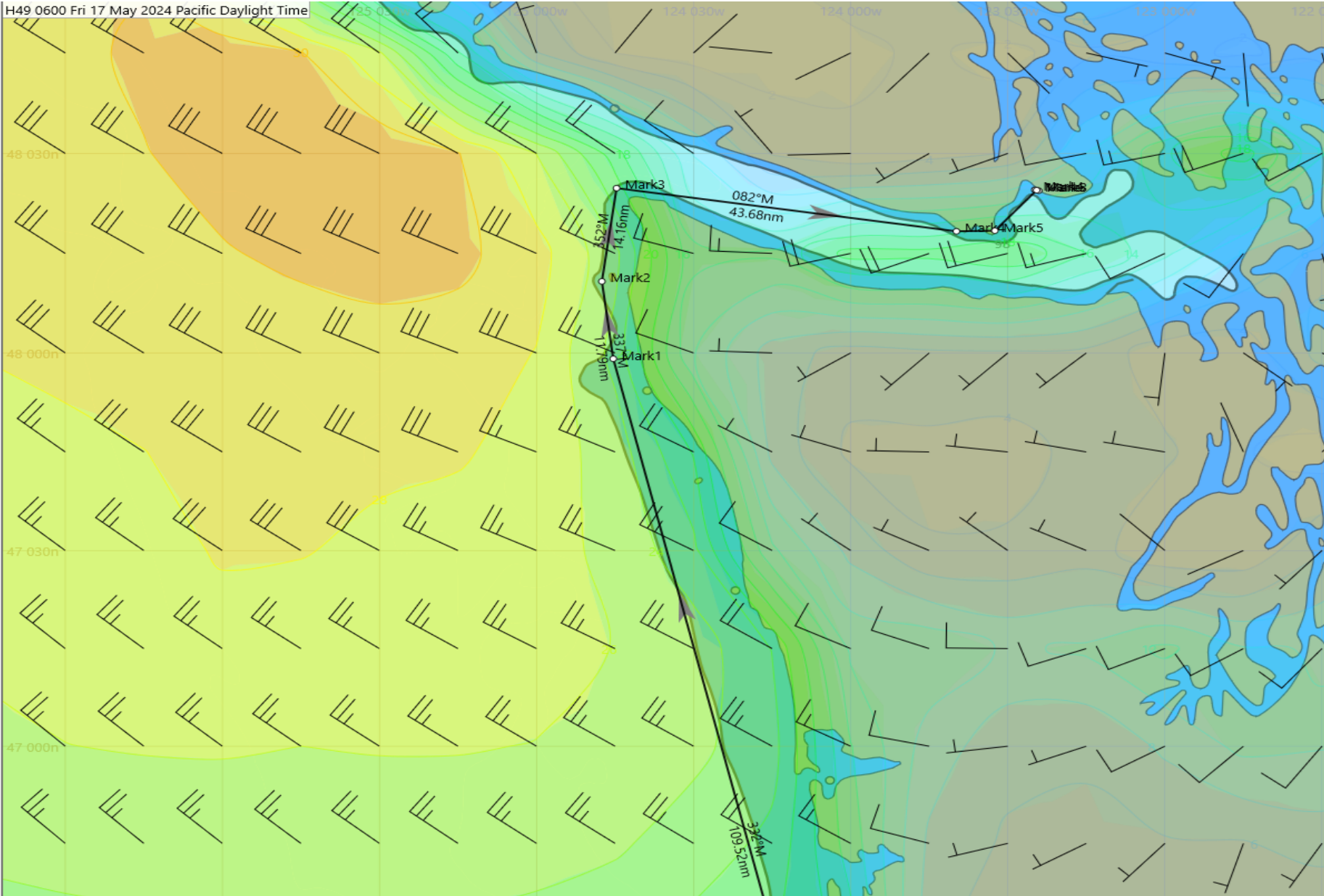
16 May 2200Hrs



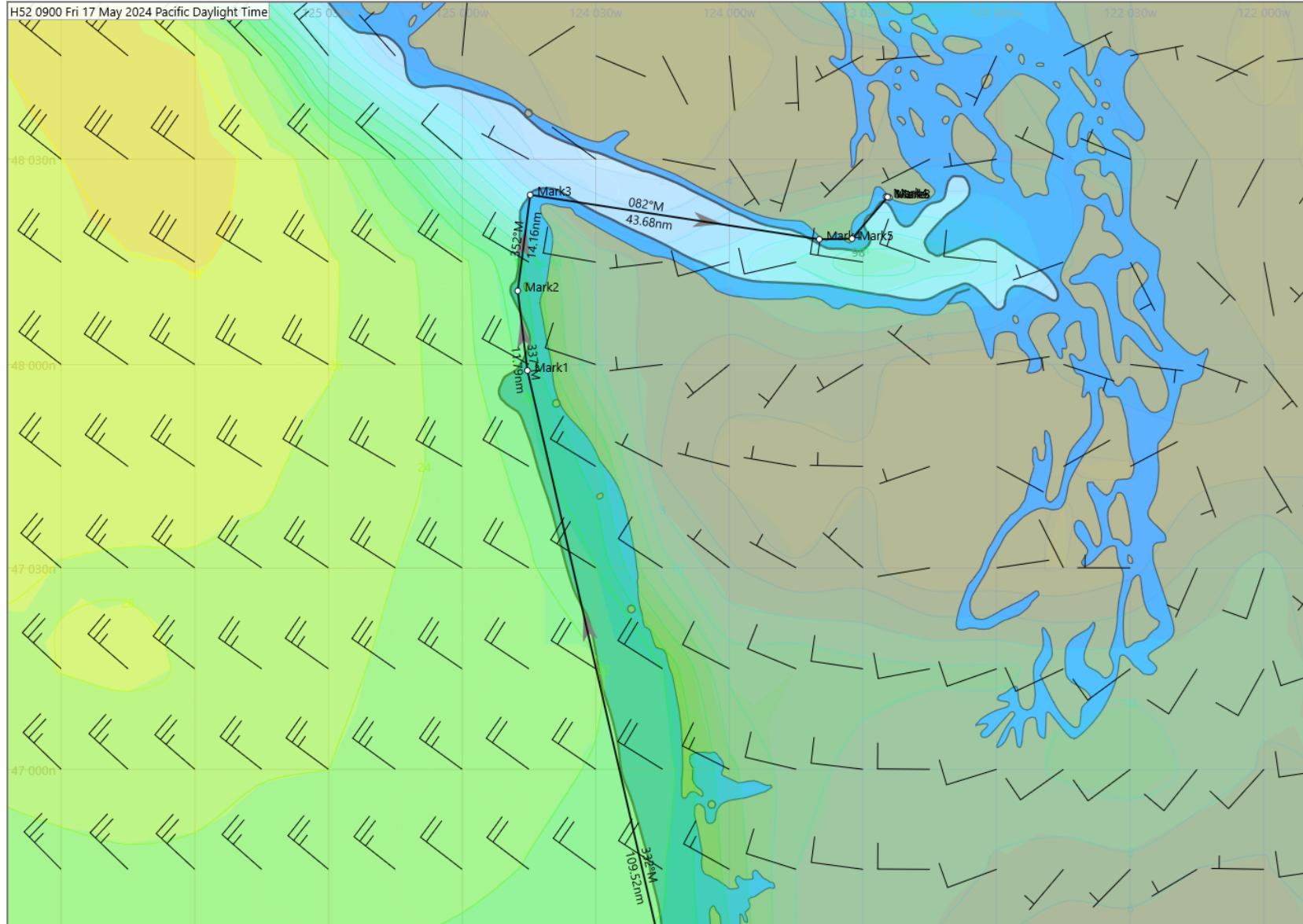
17 May 0200 hrs



17 May 0600 hrs



17 May 0900 hrs



Summary for May 16th-18th

- For the start expect WSW to WNW breeze of 5-12 knots. As you sail north the breeze will build and clock to WNW to NW at 15-20 knots.
- By late afternoon and early evening at roughly 47 30N to 47 40N expect 20-25 knts from the NW.
- By 2100 hrs at roughly 48N expect 25-35 knots from the NW to NNW. This will hold through the night and into the early morning hours.
- The breeze will start to ease to 5-15 knots by 0600-0700 hrs and easing even more after you round Cape Flattery.

Race Summary (cont)

- The boats that round Cape Flattery early (Zvi, FBOS) can expect some of the breeze (15-20 knts) to carry well down the Strait of JdF. The J-120 and J-35 can expect 5-12 knts. For vessels still in the Straits by 1400-1500 hrs expect the afternoon westerly to fill in and provide a nice run to the finish.

Crystal Ball Roundings & Finishes

<u>Boat</u>	<u>Cape Flattery</u>	<u>Finish</u>
•Zvi	0030 hrs 17May	0530 hrs
•FBOS	0319 hrs	0920 hrs
•J-120	0500 hrs	1500 hrs
•J-35	0700 hrs	1835 hrs
•Cat 36	0830 hrs	1950 hrs.

Good Luck!

- Be safe and have a great race.
- Not that it applies to this Race, but welcome to the first day of the Eastern Pacific Hurricane Season!
- Questions?